



Nordic Summit, BJS Schweiz

Älmhult, 3 September 2009

by

Claes Sörman, Logistic Manager

Intercontainer Scandinavia AB, Göteborg

intercontainer

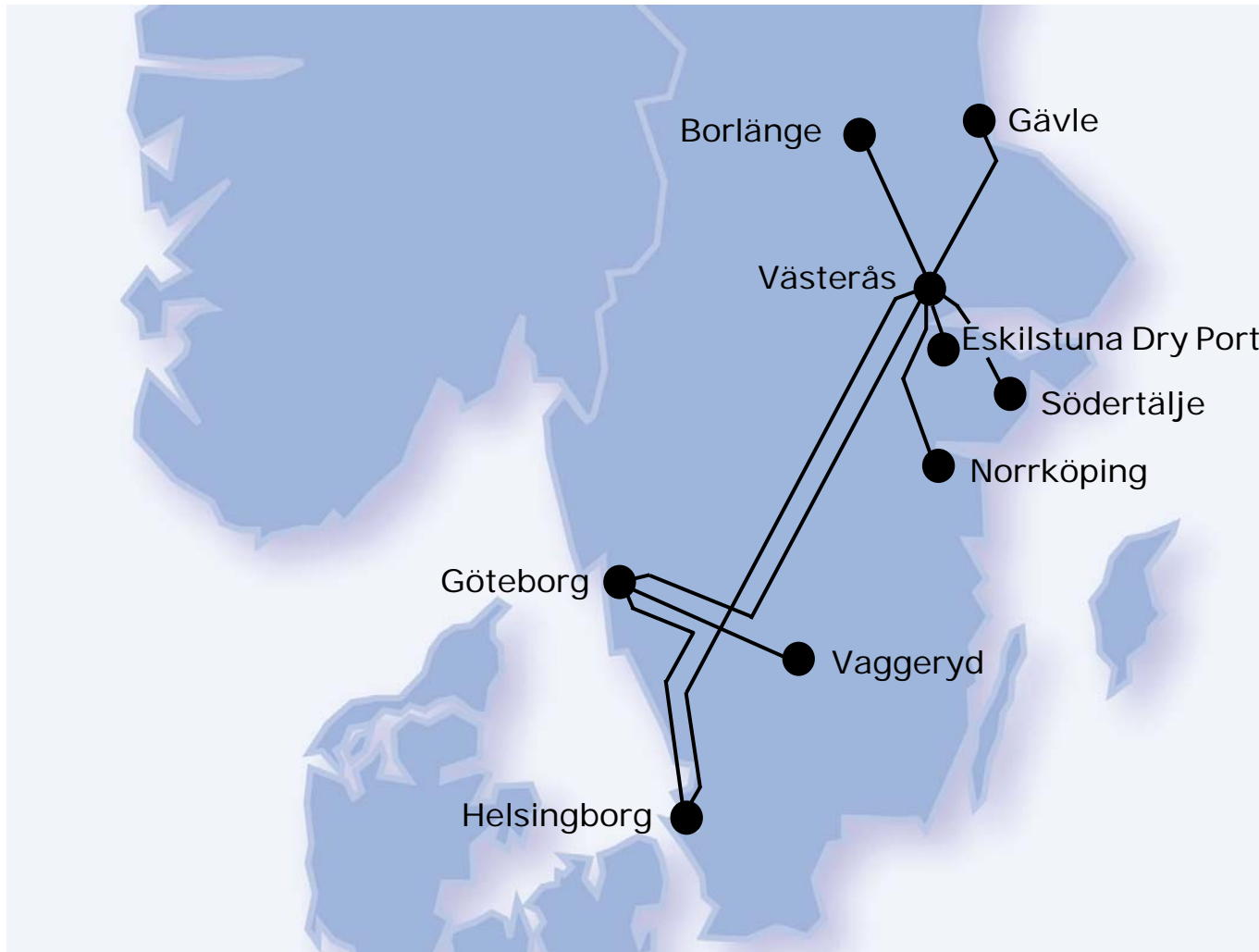
Intercontainer (Scandinavia) AB

Foundation	1993
Head Office	Goteborg
Managing Director	Peter Gustavsson
Employees	6
Share holders	100% ICF
Transported volume	2008: 140'000 TEU 2009: 140'000 TEU (forecast)
Traction provider	TGOJ Trafik AB

intercontainer



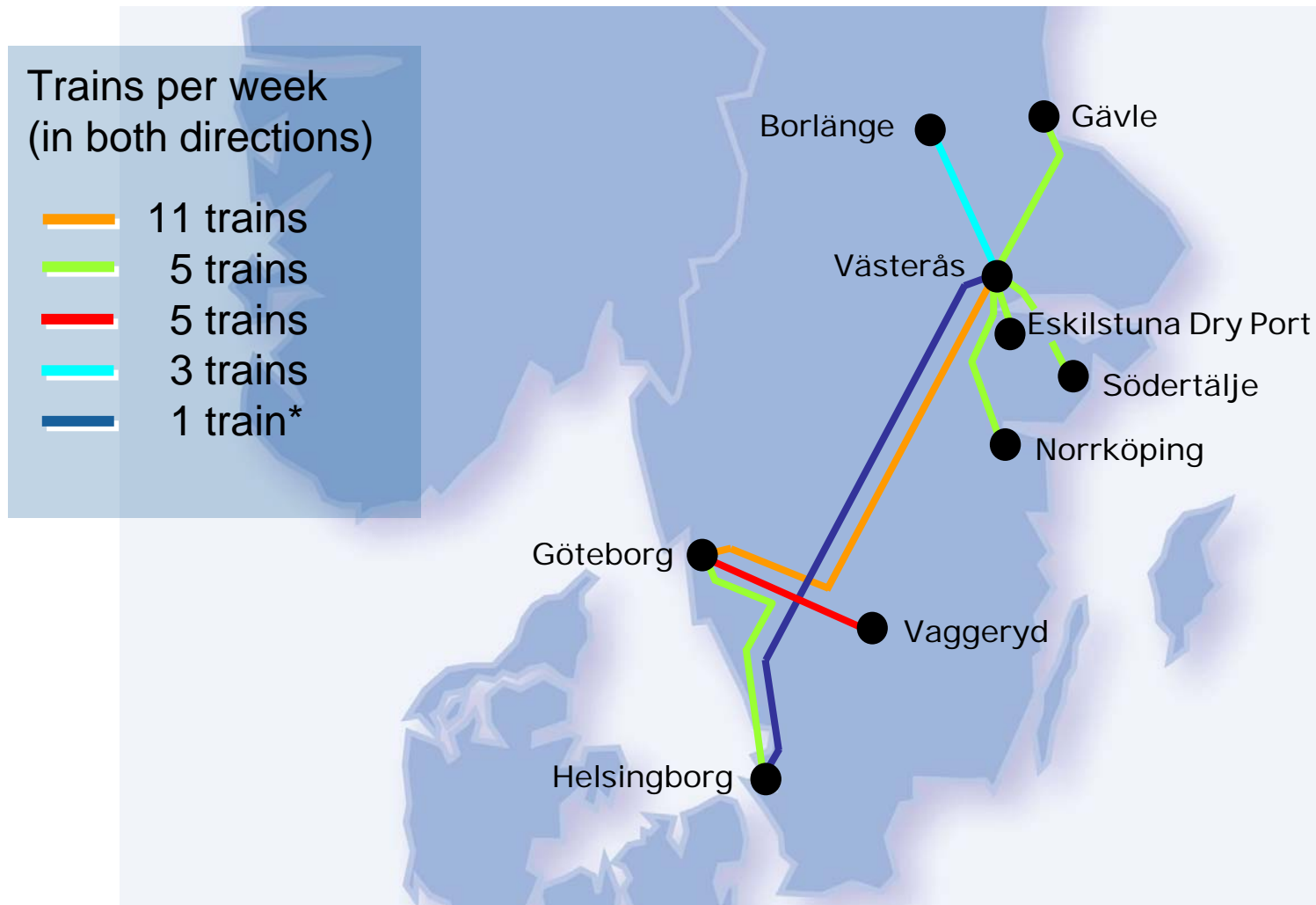
ICS Network



intercontainer



ICS Network: Frequencies



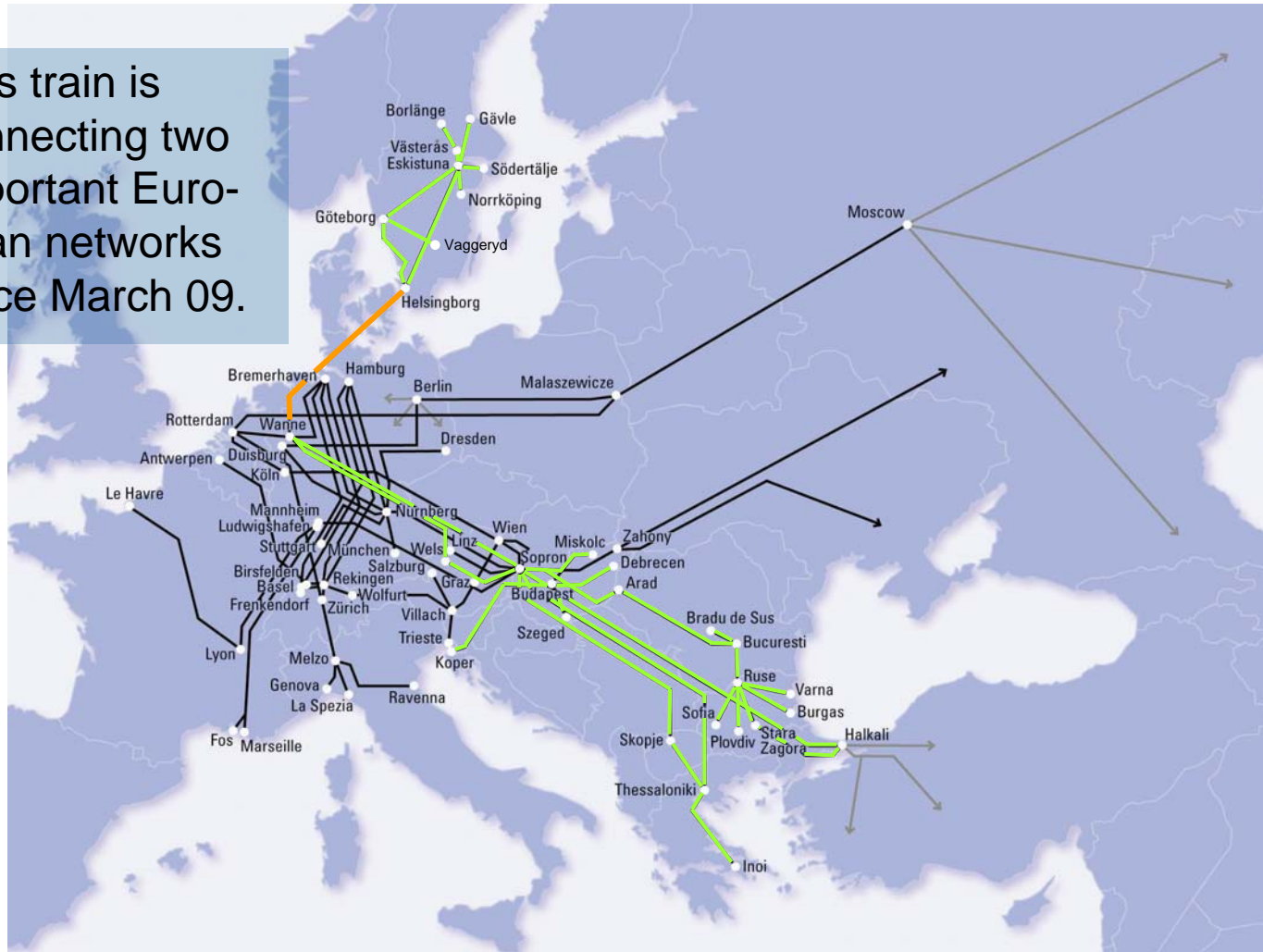
* Temporary reduction from 3 to 1 train per week

intercontainer



New: Wanne–Helsingborg Shuttle 5 x per week

This train is connecting two important European networks since March 09.



intercontainer



New: ICS market strategy

To consolidate and develop business, even during the economic crises, ICS started december last year to go after:

- Trailer
- Swap-body
- Tank and bulk container

- All terminals in the ICS network are now equipped with facilities to unload trailers and swap-bodies.

- ICS is now serving both terminlas in Göteborg, the Port of Göteborg Rail Terminal and the Göteborg Ro/Ro Terminal.

intercontainer



Thank you.

intercontainer

